



**EXENEO**

FUTURE-PROOF EXPLOSION PROTECTION



## ATEX-CERTIFIED MOISTURE-PROOF LUMINAIRE

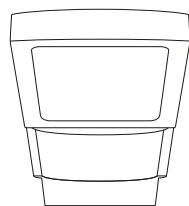
Developed for the most adverse environmental conditions in potentially explosive atmospheres (zones 1/21). Resistant to moisture, dust, gases and extreme temperatures: EXENEO combines a strong protective housing with optimal thermal management as well as state-of-the-art LED technology. A modular design that looks to the future: all the components can be individually replaced and upgraded. Smart installation, simple maintenance and optimised life time included. EXENEO – the future-proof ATEX-certified industrial luminaire.

### BROAD APPLICATION, FROM OIL REFINERIES TO OUTDOORS.

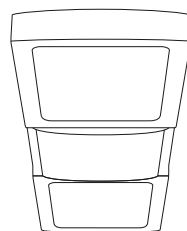
From oil and gas refineries, food and beverage processing plants to the automotive industry and logistics: the EXENEO can be used anywhere food, wood, textiles, paper or paint are handled. In areas where flammable gases or combustible dusts occasionally build up and form potentially explosive atmospheres, the EXENEO industrial luminaire really comes into its own. ATEX-certified for zones 1 (flammable gases) and 21 (combustible dusts). The wall-mounted version is even suitable for outdoor applications.

### CUSTOM USE. CUSTOM DESIGN.

The EXENEO is available in two different designs: a single-arm version with one LED module or a double-arm version with two LED modules. Customers can mix and match luminaires to suit their needs and combine them with a choice of different installation types, lumen packages and clear or opal covers. The selection is as wide as the potential applications of the EXENEO, ranging from 2700 lumen (one-sided, opal) to 11 000 lumen (two-sided, clear). The right light for every situation.



EXENEO S

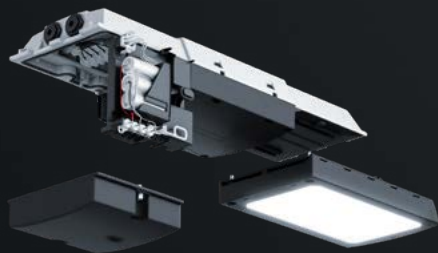


EXENEO L



Through-wiring reduces  
installation effort.

EXENEO can be connected in series. This means that for the power connection only one continuous cable is required instead of numerous individual connections.



**EXENEO emergency lighting variant.**  
Safety in every situation: Our explosion-protected luminaire with integrated, battery-operated emergency lighting function - reliable lighting when it counts.

**Hard shell.**  
An important feature of the ATEX-tested product design is the fibreglass housing.

**High impact resistance.**  
The IK10 impact resistance rating ensures that EXENEO luminaires are extremely resistant to impact.

An important feature of the ATEX-tested product design is the fibreglass housing.

The modularity of the EXENEO makes sure that the explosion-proof luminaire is fit for the future. It means that all components can be replaced and upgraded independently of each other. The LED module and ballast can both be replaced within minutes, for example.

## PRODUCT FAMILY OVERVIEW

**EXENEO S**



**EXENEO L**



<b>Mounting type</b>	surface-mounted (ceiling, wall), poles/rods, pendant, chain suspension	
<b>Dimensions</b>	770 x 201 x 115 mm	931 x 201 x 115 mm
<b>Luminaire lumious flux</b>	2700, 5400 lm	7900, 11000 lm
<b>Colour temperature</b>	4000K (others on request)	
<b>Luminaire efficiency</b>	up to 133lm/W	
<b>Typical application</b>	oil and gas refineries, food and beverage processing plants, automotive industry, logistics	
<b>Housing material</b>	glass fibre reinforced plastic (GRP)	
<b>Protection class</b>	IP66, IP67	
<b>Impact resistance</b>	IK10	
<b>Light distribution</b>	Medium Beam	Medium Beam, Narrow Beam
<b>Controls</b>	switchable	
<b>Emergency luminaires</b>	integrated single battery power supply, central battery power supply	
<b>Temperature range</b>	-44 °C to +55 °C	
<b>ATEX zones</b>	1/21	
<b>ATEX marking</b>	gases: II 2G Ex eb ib op is q IIC T4/T5 Gb, dust: II 2D Ex op is tb IIIC T4/5 Db	

[zumtobel.com/exeneo](https://zumtobel.com/exeneo)